

Life+ Elia-RTE sustainable corridor management continued afterwards (Life2)

NRDC webinar
Sustainable corridors
June 19th 2020





Overhead lines (OHL) in forests and N2000

Transmission System Operators : Elia (Belgium), RTE (France)

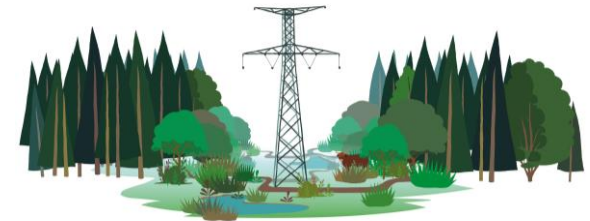
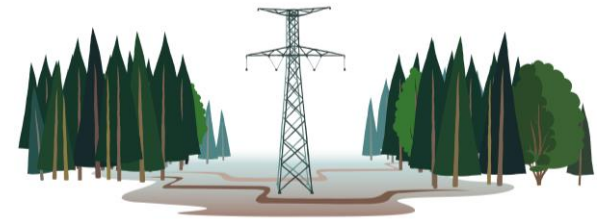
OHL through forests and N2000 areas (bird-, habitat-EU Directives)

TSOs nearly never own the land under OHL

Always in a multi-partner approach with
the aim to improve biodiversity

Always in respect of security of supply and safety

Fullfilling a societal mission : corridors help in halting biodiversity loss (instead
of seeing them as no man's land)



Life Elia - RTE – 7 phases

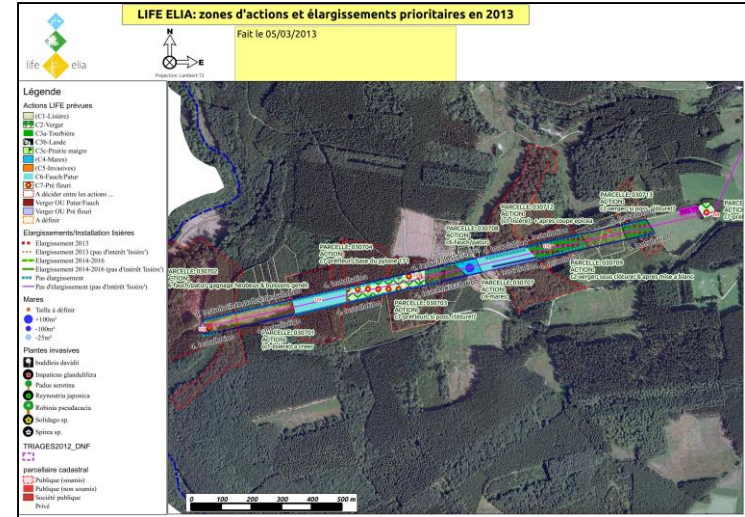
a. Cartography (vegetation)

b. Agreements with local stakeholders

c. Implementation : tender, realization, control

d. Management plan: objectives, maintenance

e. Management of the corridor



f. Biological indicators

g. Communication



Life+ Elia-RTE – Cost Benefit Analysis (CBA)



Cost per hectare based on realities of Life+ Elia-RTE (in €)

(last cut-down before new management installed not included)

(subsidies of EU not taken in deduction)

Per hectare in corridor - based on cost of Life+ Elia-RTE																			
		2018	2019	2020	2021	2022	2023	2024	2025	2026	2027	2028	2029	2030	2031	2032	cost '18 - '32		
classical management		0	0	1500	0	0	1500	0	0	1500	0	0	1500	0	0	1500	7.500,00		
	part in project surface	cost of installing															maintenance cost '19 - '32		
forest edge - restore	135	297,00	924	0	300	0	0	300	0	0	300	0	0	300	0	0	620	1820	585,00
forest edge - plant	113	416,75	1549	216	516	0	0	300	0	0	300	0	0	300	0	0	620	2252	605,90
grazing - cows, horse	44	234,77	2241	0	0	0	160	0	0	0	160	0	0	0	0	0	2241	2561	268,30
grazing - sheep	15	209,71	5872	0	0	0	160	0	0	0	160	0	0	0	0	0	5872	6192	221,14
meadow	35	257,33	3088	0	0	0	0	0	0	0	0	0	0	0	0	0	0	0	0,00
nature - heath	58	183,80	1331	0	0	0	0	0	0	0	0	500	0	0	0	0	0	500	69,05
nature - peat	20	167,29	3513	0	0	0	0	0	0	0	0	500	0	0	0	0	0	500	23,81
	mean cost of installing	420	1.766,66	-216	684	0	-320	900	0	0	900	-320	-1000	900	0	0	-7853		mean maintenance cost
																			1.773,19
																			profit :
																			5.726,81

In short : over a period of 15 years, the mean cost of classic maintenance (cutting anything that grows every 3 years) is more costly than this sustainable management (taking in account the different actions distributed as done in the Life+ Elia-RTE project).

Elia's own "Life2" : what, why



- Realize around 420 hectares according to the current Life-Elia principles
- React positively to propositions to participate in other stretches
- Continue in Wallonia, start in Flanders
- For five years : 1/2018 – 12/2022
- No subsidies anymore

Arguments on which the decision was based

- **Positive image** : better relations with authorities, with local communities near OHL, better acceptance of OHL (and future projects)
- Improved **security of overhead lines** (reduced risk due to vegetation staying lower)
- Internal training of patrollers, improved **competencies** in relation to vegetation, becoming **proud** to be on the job
- ROI : 3 to 13 years (with WACC of 5 %)

"Life 2", financial elements (2018 – 2022)

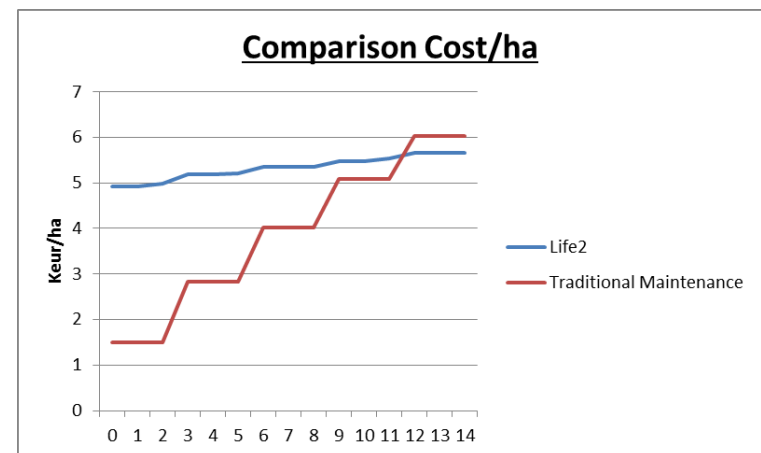
(After-Life : 0,4 M€ ; mandatory)

New realizations under lines : 0,7 M€

Expertise (cartography, conventioning, mgmt): 1,4 M€

Follow-up of bio-indicators : 0,2 M€

Communication : 0,1 M€



Acceptance of OHL in EU context

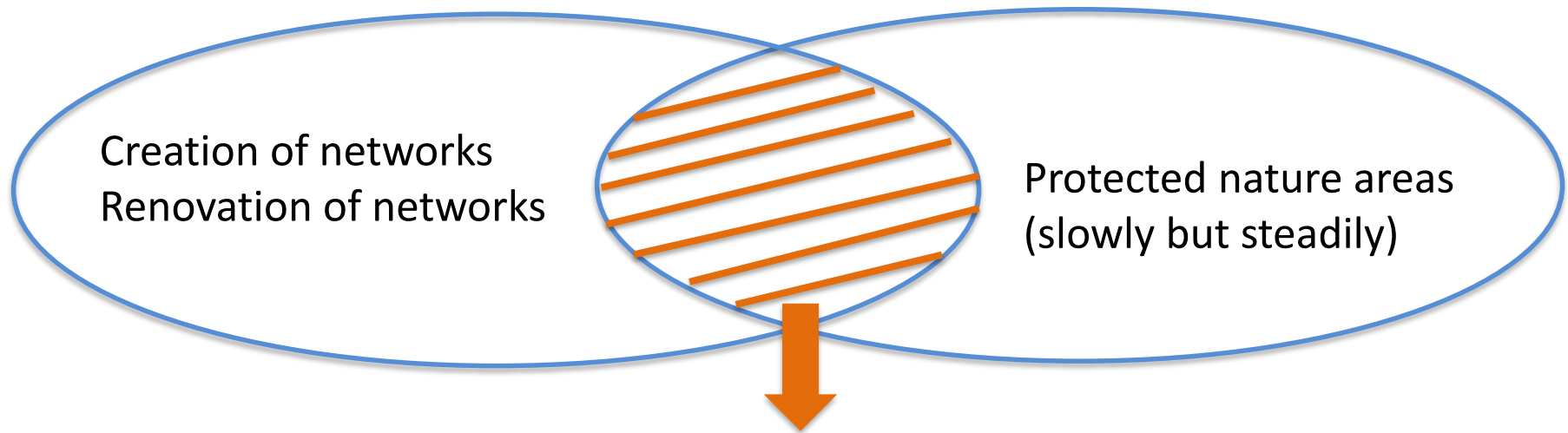


GD Energy

**30% of energy from
green sources - 2030**

GD Environment

**Natura 2000
network for biodiversity**



LIFE Elia-RTE

electrical safety and biodiversity

Doubling a 30 km 380 kV OHL Maaseik - Zutendaal



Others picked up the Life Elia-RTE ideas : Flemish Nature Administration (re-create original biotope of heath)

Corridor of 18 km length and 65 m wide (117 ha)

Management plan : 26 years

200 - 400 sheep grazing instead of regular elimination of all growth

Agreement with 130 owners (100 k€ +) 50 k€ / year